

CX700

HYDRAULIC CRAWLER CRANE

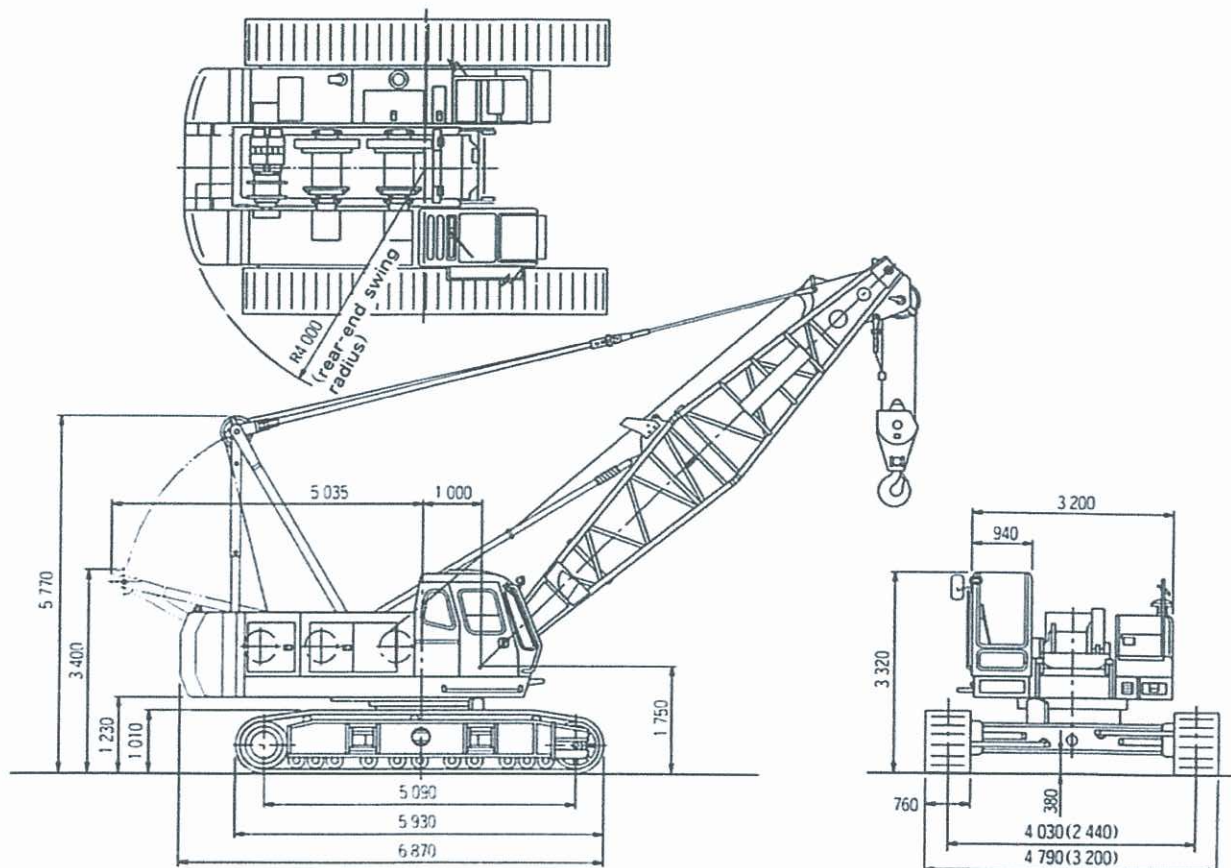
INDEX

CRAWLER CRANE	■ Dimensions ■ Specifications	4	
	■ Working Ranges	5	
	■ Crane Ratings (Main Boom in 360° Working Area) ...	6	
	■ Crane Ratings (Auxiliary Jib in 360° Working Area)	8	
	■ Crane Ratings (Main boom with Auxiliary Jib in 360° Working Area)	10	
	■ Crane Ratings (Jib in 360° Working Area)	12	
	■ Crane Ratings (Main Boom with Jib in 360° Working Area)	20	
	■ Crane Boom Construction ■ Crane Jib Construction ■ Component Weights and Dimensions for Transport	28	
FULL-LUFFING TOWER CRANE	■ Dimensions ■ Tower Jib Construction ■ Specifications	29	
	■ Rated loads for 25m Tower Crane ■ Working Ranges ...	30	
	■ Rated loads for 28m Tower Crane ■ Working Ranges ...	31	
	■ Rated loads for 31m Tower Crane ■ Working Ranges ...	32	
	■ Rated loads for 34m Tower Crane ■ Working Ranges ...	33	
	■ Rated loads for 37m Tower Crane ■ Working Ranges ...	34	
	■ Rated loads for 40m Tower Crane ■ Working Ranges ...	35	
	■ Rated loads for 43m Tower Crane ■ Working Ranges ...	36	
	TOWER/CRAWLER CRANE	■ Crane Ratings (Main Boom in 360° Working Area)	37
		■ Crane Ratings (Auxiliary Jib in 360° Working Area)	38
■ Crane Ratings (Main Boom with Auxiliary Jib in 360° Working Area)		39	
■ Crane Ratings (Jib in 360° Working Area)		40	
■ Crane Ratings (Main Boom with Jib in 360° Working Area)		42	
■ Tower Boom Construction ■ Tower Jib Construction ■ Tower/Crawler Crane Construction ■ Crane Jib Construction ■ Component Weights and Dimensions for Transport		44-45	
CLAMSHELL	■ Dimensions ■ Specifications ■ Working Ranges ■ Clamshell Bucket	46	
	TECHNICAL DATA ■ Standard and Optional Equipment	47-48	

Note : All "ton" described in this catalog represent metric tons.

■ Dimensions

Unit:mm



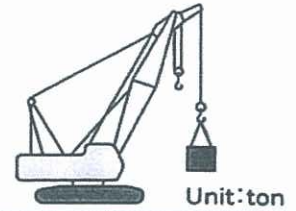
Dimensions shown in () are with tracks retracted.

■ Specifications

Maximum rated load	ton × m	70 × 3.7
Basic boom length	m	9
Max. boom length	m	54
Jib length	m	9 - 18
Max. boom with jib length	m	45 + 18
Main hoist drum	m/min	* 100/65/32
Aux. hoist drum	m/min	* 100/65/32
Boom hoist drum	m/min	* 53
Swing speed	min ⁻¹ (rpm)	3.0(3.0)
Travel speed	km/h	* 1.3/0.9
Gradeability	% (°)	40 (22)
Engine model		Hino H07CT
Rated power	kW/min ⁻¹ (PS/rpm)	132.4/2 000(180/2 000)
Ground pressure	kPa(kgf/cm ²)	77.6(0.79)
Operating weight	ton	64.9 (Equipped with 9m boom and 70ton capacity hook)

NOTE: Data expressed above are in SI units(International System of Unit), followed by data in conventional units in ().
*Data in the crane mode will vary with the load.

75% Tipping Load(PCSA Rating)



■ Crane Rating(Auxiliary Jib in 360° Working Area)

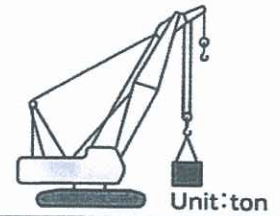
Working radius (m)	Boom Length (m)													
	12	15	18	21	24	27	30	33	36	39	42	45	48	51
4.4	6.50													
4.5	6.50													
5.0	6.50	6.50												
5.5	6.50	6.50	6.50											
6.0	6.50	6.50	6.50	6.1m × 6.50t	6.6m × 6.50t									
7.0	6.50	6.50	6.50	6.50	6.50	7.2m × 6.50t	7.7m × 6.50t							
8.0	6.50	6.50	6.50	6.50	6.50	6.50	6.50	8.3m × 6.50t	8.8m × 6.50t					
9.0	6.50	6.50	6.50	6.50	6.50	6.50	6.50	6.50	6.50	9.3m × 6.50t	9.9m × 6.50t			
10.0	6.50	6.50	6.50	6.50	6.50	6.50	6.50	6.50	6.50	6.50	6.50	10.5m × 6.50t	11.0m × 6.50t	11.5m × 6.50t
12.0	6.50	6.50	6.50	6.50	6.50	6.50	6.50	6.50	6.50	6.50	6.50	6.50	6.50	6.50
14.0	12.7m × 6.50t	6.50	6.50	6.50	6.50	6.50	6.50	6.50	6.50	6.50	6.50	6.50	6.50	6.50
16.0		15.3m × 6.50t	6.50	6.50	6.50	6.50	6.50	6.50	6.50	6.50	6.50	6.50	6.50	6.50
18.0			17.9m × 6.50t	6.50	6.50	6.50	6.50	6.50	6.50	6.50	6.50	6.50	6.50	6.50
20.0				6.50	6.50	6.50	6.50	6.50	6.50	6.45	6.35	6.25	6.10	6.00
22.0				20.5m × 6.50t	6.15	6.05	5.90	5.80	5.70	5.55	5.45	5.35	5.20	5.10
24.0					23.1m × 5.75t	5.35	5.20	5.05	5.00	4.80	4.75	4.65	4.50	4.35
26.0						25.5m × 4.90t	4.60	4.45	4.40	4.20	4.15	4.00	3.85	3.75
28.0							4.10	3.95	3.85	3.70	3.60	3.50	3.35	3.20
30.0							28.3m × 4.05t	3.55	3.45	3.25	3.20	3.05	2.90	2.75
32.0								30.8m × 3.40t	3.05	2.90	2.80	2.65	2.45	2.30
34.0									33.4m × 2.85t	2.60	2.45	2.30	2.10	1.90
36.0										2.25	2.10	1.95	1.75	1.55
38.0											1.80	1.65	1.45	
40.0											38.6m × 1.75t	1.40		

- NOTES
- The rated loads shown do not exceed 75% of tipping load with the machine on firm level ground.
 - To calculate the maximum load that can actually be lifted, deduct weight of all lifting accessories, such as main hook, from figures shown above.

Hook Capacity	Weight
70.0t	0.80t
40.0t	0.41t
15.0t	0.36t
6.5t	0.18t

- Working radius is the horizontal distance from the swing center to the center of gravity of a lifted load.
- The counterweight is 23.8ton.
- Be sure to fully extend the side frames before operating the machine.
- Correlation between the number of falls, maximum rated loads, hook weights are shown in the table below.

75% Tipping Load(PCSA Rating)



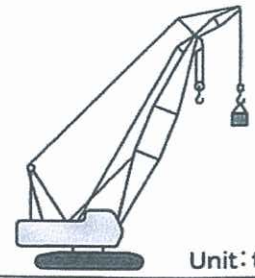
Crane Ratings(Main boom with Auxiliary Jib in 360° Working Area)

Working radius (m)	Boom Length (m)														
	12	15	18	21	24	27	30	33	36	39	42	45	48	51	
3.7	70.00														
4.0	64.60	4.2m × 61.45t													
4.5	57.75	57.55	4.8m × 52.85t												
5.0	49.55	49.45	49.40	5.3m × 44.85t											
5.5	42.55	42.40	42.35	42.25	5.8m × 37.85t										
6.0	37.25	37.10	37.00	36.90	36.85	6.4m × 33.35t	6.9m × 29.15t								
7.0	29.70	29.55	29.45	29.35	29.25	29.20	29.15	7.5m × 26.20t							
8.0	24.55	24.40	24.30	24.20	24.10	24.05	23.95	23.85	23.40	8.6m × 21.35t					
9.0	20.90	20.70	20.65	20.50	20.40	20.35	20.25	20.15	20.10	20.00	9.1m × 19.35t	9.7m × 17.80t			
10.0	18.15	17.95	17.85	17.70	17.60	17.55	17.45	17.35	17.30	17.15	17.10	17.00	10.2m × 16.40t	10.7m × 15.00t	
12.0	11.5m × 14.80t	14.05	13.95	13.80	13.70	13.65	13.55	13.40	13.35	13.20	13.15	13.05	12.95	12.80	
14.0		11.45	11.35	11.20	11.05	11.00	10.90	10.75	10.70	10.60	10.50	10.40	10.30	10.15	
16.0		14.2m × 11.25t	9.50	9.30	9.20	9.15	9.00	8.90	8.85	8.70	8.60	8.50	8.40	8.25	
18.00			16.8m × 8.90t	7.95	7.80	7.70	7.60	7.45	7.40	7.25	7.20	7.10	6.95	6.85	
20.0				19.4m × 7.15t	6.70	6.65	6.50	6.35	6.30	6.15	6.10	6.00	5.85	5.70	
22.0					5.85	5.75	5.60	5.50	5.40	5.25	5.20	5.10	4.95	4.80	
24.0						5.05	4.90	4.75	4.70	4.55	4.45	4.35	4.20	4.10	
26.0							24.5m × 4.90t	4.35	4.20	4.10	3.95	3.85	3.75	3.60	3.50
28.0								27.2m × 4.00t	3.70	3.60	3.45	3.35	3.25	3.10	2.95
30.0									29.8m × 3.30t	3.15	3.00	2.90	2.80	2.65	2.55
32.0										2.80	2.65	2.55	2.45	2.25	2.10
34.0										32.4m × 2.75t	2.30	2.20	2.10	1.90	1.70
36.0											35.0m × 2.20t	1.90	1.75	1.55	1.35
38.0												37.5m × 1.65t	1.45		

- NOTES
- The rated loads shown do not exceed 75% of tipping load with the machine on firm level ground.
 - To calculate the maximum load that can actually be lifted, deduct weight of all lifting accessories, such as main hook, from figures shown above.
 - Working radius is the horizontal distance from the swing center to the center of gravity of a lifted load.
 - The counterweight is 23.8ton.
 - Be sure to fully extend the side frames before operating the machine.
 - Correlation between the number of falls, maximum rated loads, hook weights are shown in the table below.

Hook capacity (t)	Hook weight (t)	Maximum rated load (t)									
		10	9	8	7	6	5	4	3	2	1
70.0	0.80	70.0	58.5	52.0	45.5	39.0	32.5	26.0	19.5	13.0	—
40.0	0.41				40.0	39.0	32.5	26.0	19.5	13.0	—
15.0	0.36								15.0	13.0	—
6.5	0.18										6.5

75% Tipping Load(PCSA Rating)



■ Crane Ratings(Jib in 360° Working Area) (1)

Unit: ton

Main Boom Length(m)	27					
Jib Boom Length(m)	9.0		13.5		18.0	
Offset Angle(°)	10	30	10	30	10	30
Working Radius(m)	10	30	10	30	10	30
9.4	6.50					
10.0	6.50		11.0m × 6.50t			
12.0	6.50	12.1m × 6.50t	6.50		12.6m × 5.90t	
14.0	6.50	6.50	6.50	15.0m × 6.50t	5.70	
16.0	6.50	6.50	6.50	6.50	5.40	17.9m × 4.30t
18.0	6.50	6.50	6.50	6.25	5.15	4.30
20.0	6.50	6.50	6.50	5.85	4.95	4.15
22.0	6.20	6.40	6.40	5.55	4.75	4.05
24.0	5.50	5.60	5.65	5.25	4.55	3.95
26.0	4.85	4.95	5.00	5.00	4.40	3.85
28.0	4.35	4.45	4.50	4.65	4.25	3.65
30.0	3.90	3.95	4.05	4.15	4.10	3.50
32.0	3.50	3.55	3.65	3.75	3.75	3.35
34.0	3.33m × 3.30t	33.8m × 3.25t	3.30	3.40	3.40	3.20
36.0			3.00	3.05	3.10	3.10
38.0			37.5m × 2.80t	2.75	2.80	2.90
40.0				38.3m × 2.70t	2.60	2.65
42.0					41.7m × 2.40t	2.40
44.0						42.8m × 2.30t

Unit: ton

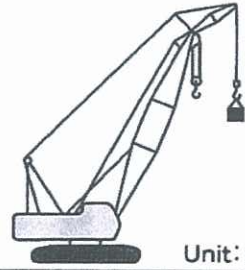
Main Boom Length(m)	30					
Jib Boom Length(m)	9.0		13.5		18.0	
Offset Angle(°)	10	30	10	30	10	30
Working Radius(m)	10	30	10	30	10	30
10.0	6.50		11.5m × 6.50t			
12.0	6.50	12.7m × 6.50t	6.50		13.1m × 5.90t	
14.0	6.50	6.50	6.50	15.6m × 6.50t	5.80	
16.0	6.50	6.50	6.50	6.50	5.50	
18.0	6.50	6.50	6.50	6.35	5.25	18.5m × 4.30t
20.0	6.50	6.50	6.50	6.00	5.05	4.20
22.0	6.10	6.30	6.25	5.70	4.85	4.10
24.0	5.35	5.50	5.50	5.40	4.65	4.00
26.0	4.75	4.85	4.90	5.10	4.50	3.90
28.0	4.20	4.30	4.35	4.55	4.35	3.75
30.0	3.75	3.85	3.90	4.05	4.00	3.60
32.0	3.35	3.45	3.50	3.65	3.60	3.45
34.0	3.05	3.10	3.15	3.30	3.25	3.30
36.0	35.9m × 2.75t	2.75	2.85	2.95	2.95	3.10
38.0		36.4m × 2.70t	2.60	2.65	2.70	2.80
40.0			40.1m × 2.35t	2.40	2.45	2.55
42.0				40.9m × 2.30t	2.25	2.30
44.0					2.05	2.10
46.0					44.3m × 2.00t	45.4m × 1.90t

- NOTES
1. The rated loads shown do not exceed 75% of tipping load with the machine on firm level ground.
 2. To calculate the maximum load that can actually be lifted, deduct weight of all lifting accessories, such as main hook, from figures shown above.

Hook Capacity	Weight
70.0t Hook	0.80t
40.0t Hook	0.41t
15.0t Hook	0.36t
6.5t Hook	0.18t

3. Working radius is the horizontal distance from the swing center to the center of gravity of a lifted load.
4. The counterweight is 23.8ton.
5. Be sure to fully extend the side frames before operating the machine.
6. Correlation between the number of falls, maximum rated loads, hook weights are shown in the table below.

75% Tipping Load(PCSA Rating)



■ Crane Ratings(Jib in 360° Working Area)(2)

Unit: ton

Main Boom Length(m)	33					
Jib Boom Length(m)	9.0		13.5		18.0	
Offset Angle(°)	10	30	10	30	10	30
Working Radius(m)	10	30	10	30	10	30
10.5	6.50					
12.0	6.50	13.2m × 6.50t	12.1m × 6.50t		13.7m × 5.90t	
14.0	6.50	6.50	6.50		5.85	
16.0	6.50	6.50	6.50	16.1m × 6.50t	5.60	
18.0	6.50	6.50	6.50	6.50	5.35	19.0m × 4.30t
20.0	6.50	6.50	6.50	6.15	5.15	4.20
22.0	5.95	6.20	6.15	5.85	4.95	4.10
24.0	5.20	5.40	5.40	5.55	4.75	4.00
26.0	4.60	4.75	4.75	5.00	4.60	3.95
28.0	4.05	4.20	4.20	4.45	4.35	3.85
30.0	3.60	3.75	3.75	3.95	3.90	3.70
32.0	3.25	3.30	3.40	3.55	3.50	3.55
34.0	2.90	2.95	3.05	3.15	3.15	3.35
36.0	2.60	2.65	2.75	2.85	2.85	3.00
38.0	2.35	2.35	2.45	2.55	2.55	2.70
40.0	38.5m × 2.30t	39.0m × 2.20t	2.25	2.30	2.30	2.45
42.0			2.00	2.00	2.10	2.20
44.0			42.7m × 1.90t	43.5m × 1.85t	1.85	1.95
46.0					1.65	1.70
48.0					46.9m × 1.60t	1.50

Unit: ton

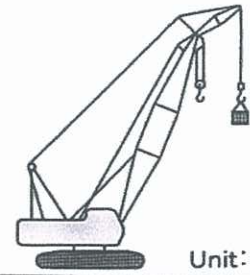
Main Boom Length(m)	36					
Jib Boom Length(m)	9.0		13.5		18.0	
Offset Angle(°)	10	30	10	30	10	30
Working Radius(m)	10	30	10	30	10	30
11.0	6.50					
12.0	6.50	3.7m × 6.50t	12.6m × 6.50t			
14.0	6.50	6.50	6.50		14.2m × 5.90t	
16.0	6.50	6.50	6.50	16.7m × 6.50t	5.65	
18.0	6.50	6.50	6.50	6.50	5.45	19.6m × 4.25t
20.0	6.50	6.50	6.50	6.25	5.20	4.25
22.0	5.90	6.10	6.05	5.95	5.05	4.15
24.0	5.15	5.35	5.30	5.60	4.85	4.05
26.0	4.50	4.70	4.70	4.95	4.70	3.95
28.0	4.00	4.15	4.15	4.40	4.25	3.90
30.0	3.55	3.65	3.70	3.90	3.80	3.75
32.0	3.15	3.25	3.30	3.45	3.40	3.60
34.0	2.80	2.90	2.95	3.10	3.05	3.30
36.0	2.50	2.60	2.65	2.80	2.75	2.95
38.0	2.25	2.25	2.35	2.50	2.45	2.65
40.0	1.95	1.95	2.10	2.20	2.20	2.40
42.0	41.1m × 1.80t	41.6m × 1.75t	1.85	1.95	2.00	2.15
44.0			1.65	1.70	1.75	1.85
46.0			45.3m × 1.50t	46.1m × 1.45t	1.55	1.65
48.0					1.35	1.40

- NOTES
- The rated loads shown do not exceed 75% of tipping load with the machine on firm level ground.
 - To calculate the maximum load that can actually be lifted, deduct weight of all lifting accessories, such as main hook, from figures shown above.

Hook Capacity	Weight
70.0t Hook	0.80t
40.0t Hook	0.41t
15.0t Hook	0.36t
6.5t Hook	0.18t

- Working radius is the horizontal distance from the swing center to the center of gravity of a lifted load.
- The counterweight is 23.8ton.
- Be sure to fully extend the side frames before operating the machine.
- Correlation between the number of falls, maximum rated loads, hook weights are shown in the table below.

75% Tipping Load(PCSA Rating)



Crane Ratings(Jib in 360° Working Area)(3)

Unit: ton

Main Boom Length(m)	39					
Jib Boom Length(m)	9.0		13.5		18.0	
Offset Angle(°)	10	30	10	30	10	30
Working Radius(m)	10	30	10	30	10	30
11.6	6.50					
12.0	6.50		13.2m × 6.50t			
14.0	6.50	14.3m × 6.50t	6.50		14.7m × 5.90t	
16.0	6.50	6.50	6.50	17.2m × 6.50t	5.75	
18.0	6.50	6.50	6.50	6.50	5.50	
20.0	6.50	6.50	6.50	6.40	5.30	20.1m × 4.25t
22.0	5.75	6.00	5.95	6.10	5.10	4.15
24.0	5.00	5.20	5.15	5.50	4.95	4.05
26.0	4.35	4.55	4.55	4.85	4.65	4.00
28.0	3.85	4.00	4.00	4.25	4.15	3.90
30.0	3.40	3.55	3.55	3.80	3.65	3.85
32.0	3.00	3.10	3.15	3.35	3.25	3.55
34.0	2.65	2.75	2.80	3.00	2.90	3.20
36.0	2.35	2.40	2.50	2.65	2.60	2.85
38.0	2.00	2.10	2.20	2.35	2.35	2.55
40.0	1.75	1.80	1.90	2.05	2.05	2.25
42.0	1.50	1.55	1.65	1.75	1.80	1.95
44.0	43.7m × 1.30t	1.30	1.45	1.50	1.55	1.70
46.0				1.30	1.35	1.50

Unit: ton

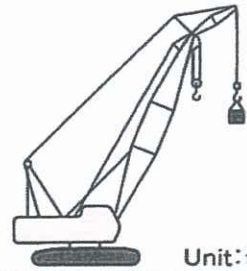
Main Boom Length(m)	42					
Jib Boom Length(m)	9.0		13.5		18.0	
Offset Angle(°)	10	30	10	30	10	30
Working Radius(m)	10	30	10	30	10	30
12.0	12.1m × 6.50t		13.7m × 6.50t			
14.0	6.50	14.8m × 6.50t	6.50		15.3m × 5.90t	
16.0	6.50	6.50	6.50	17.8m × 6.50t	5.80	
18.0	6.50	6.50	6.50	6.50	5.60	
20.0	6.50	6.50	6.50	6.50	5.35	20.7m × 4.25t
22.0	5.65	5.95	5.85	6.20	5.20	4.20
24.0	4.90	5.15	5.10	5.45	5.00	4.10
26.0	4.30	4.50	4.45	4.80	4.60	4.00
28.0	3.75	3.95	3.90	4.20	4.05	3.95
30.0	3.30	3.45	3.45	3.70	3.60	3.85
32.0	2.90	3.05	3.05	3.30	3.20	3.50
34.0	2.55	2.65	2.70	2.90	2.80	3.10
36.0	2.20	2.30	2.40	2.60	2.50	2.75
38.0	1.90	1.95	2.05	2.25	2.20	2.45
40.0	1.60	1.65	1.80	1.95	1.90	2.15
42.0	1.35	1.40	1.55	1.65	1.65	1.85
44.0			1.30	1.40	1.45	1.60
46.0						1.35

- NOTES
- The rated loads shown do not exceed 75% of tipping load with the machine on firm level ground.
 - To calculate the maximum load that can actually be lifted, deduct weight of all lifting accessories, such as main hook, from figures shown above.

Hook Capacity	Weight
70.0t Hook	0.80t
40.0t Hook	0.41t
15.0t Hook	0.36t
6.5t Hook	0.18t

- Working radius is the horizontal distance from the swing center to the center of gravity of a lifted load.
- The counterweight is 23.8ton.
- Be sure to fully extend the side frames before operating the machine.
- Correlation between the number of falls, maximum rated loads, hook weights are shown in the table below.

75% Tipping Load(PCSA Rating)



Unit: ton

Crane Ratings(Jib in 360° Working Area)(4)

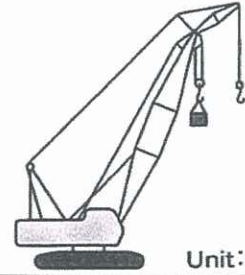
Main Boom Length(m)	45					
Jib Boom Length(m)	9.0		13.5		18.0	
Offset Angle(°)	10	30	10	30	10	30
Working Radius(m)						
12.7	6.50					
14.0	6.50	15.4m × 6.50t	14.3m × 6.50t		15.8m × 5.90t	
16.0	6.50	6.50	6.50		5.85	
18.0	6.50	6.50	6.50	18.3m × 6.50t	5.65	
20.0	6.45	6.50	6.50	6.50	5.45	21.2m × 4.25t
22.0	5.55	5.85	5.75	6.20	5.25	4.20
24.0	4.80	5.05	5.00	5.40	5.10	4.10
26.0	4.15	4.40	4.35	4.70	4.50	4.05
28.0	3.65	3.85	3.80	4.10	3.95	3.95
30.0	3.20	3.35	3.35	3.65	3.45	3.85
32.0	2.80	2.95	2.95	3.20	3.05	3.40
34.0	2.40	2.55	2.60	2.80	2.70	3.05
36.0	2.05	2.15	2.25	2.45	2.40	2.70
38.0	1.75	1.85	1.90	2.10	2.05	2.35
40.0	1.45	1.55	1.65	1.80	1.75	2.05
42.0			1.40	1.55	1.50	1.75
44.0					1.30	1.50

- NOTES
- The rated loads shown do not exceed 75% of tipping load with the machine on firm level ground.
 - To calculate the maximum load that can actually be lifted, deduct weight of all lifting accessories, such as main hook, from figures shown above.

Hook Capacity	Weight
70.0t Hook	0.80t
40.0t Hook	0.41t
15.0t Hook	0.36t
6.5t Hook	0.18t

- Working radius is the horizontal distance from the swing center to the center of gravity of a lifted load.
- The counterweight is 23.8ton.
- Be sure to fully extend the side frames before operating the machine.
- Correlation between the number of falls, maximum rated loads, hook weights are shown in the table below.

75% Tipping Load(PCSA Rating)



■ Crane Ratings(Main boom with Jib in 360° Working Area) (1)

Unit: ton

Main Boom Length(m)	27					
Jib Boom Length(m)	9.0		13.5		18.0	
Offset Angle(°)	10	30	10	30	10	30
Working Radius(m)						
6.4	33.15	32.90	32.85	32.50	32.55	32.00
7.0	28.95	28.75	28.70	28.35	28.40	27.90
8.0	23.80	23.60	23.55	23.25	23.25	22.85
9.0	20.05	19.95	19.85	19.60	19.55	19.20
10.0	17.25	17.15	17.05	16.85	16.80	16.50
12.0	13.30	13.25	13.10	12.95	12.85	12.65
14.0	10.70	10.60	10.50	10.35	10.25	10.05
16.0	8.80	8.75	8.60	8.50	8.35	8.20
18.0	7.40	7.35	7.20	7.10	6.95	6.85
20.0	6.30	6.25	6.10	6.05	5.85	5.75
22.0	5.40	5.40	5.20	5.15	5.00	4.95
24.0	4.70	4.70	4.50	4.50	4.30	4.25
24.6	4.50	4.50	4.35	4.30	4.10	4.05

Unit: ton

Main Boom Length(m)	30					
Jib Boom Length(m)	9.0		13.5		18.0	
Offset Angle(°)	10	30	10	30	10	30
Working Radius(m)						
6.9	28.90	28.70	28.65	28.30	28.35	27.85
7.0	28.90	28.70	28.65	28.30	28.35	27.85
8.0	23.70	23.55	23.50	23.20	23.20	22.80
9.0	20.00	19.85	19.75	19.55	19.50	19.15
10.0	17.15	17.05	16.95	16.75	16.70	16.40
12.0	13.20	13.15	13.00	12.85	12.75	12.55
14.0	10.60	10.50	10.40	10.25	10.15	9.95
16.0	8.70	8.60	8.50	8.40	8.25	8.10
18.0	7.25	7.20	7.05	7.00	6.85	6.75
20.0	6.15	6.10	5.95	5.90	5.75	5.65
22.0	5.30	5.25	5.10	5.05	4.90	4.80
24.0	4.55	4.55	4.40	4.35	4.15	4.10
26.0	4.00	3.95	3.80	3.75	3.60	3.55
27.2	3.65	3.65	3.50	3.45	3.30	3.20

- NOTES
1. The rated loads shown do not exceed 75% of tipping load with the machine on firm level ground.
 2. To calculate the maximum load that can actually be lifted, deduct weight of all lifting accessories, such as main hook, from figures shown above.
 3. Working radius is the horizontal distance from the swing center to the center of gravity of a lifted load.
 4. The counterweight is 23.8ton.
 5. Be sure to fully extend the side frames before operating the machine.
 6. Correlation between the number of falls, maximum rated loads, hook weights are shown in the table below.

Hook capacity (t)	Hook weight (t)	Maximum rated load (t)					
		6	5	4	3	2	1
70.0	0.80	34.45	32.50	26.00	19.50	13.00	—
40.0	0.41	34.45	32.50	26.00	19.50	13.00	—
15.0	0.36				15.00	13.00	—
6.5	0.18						6.50

75% Tipping Load(PCSA Rating)



■ Crane Ratings(Main boom with Jib in 360° Working Area)(2)

Unit:ton

Main Boom Length(m)	33					
Jib Boom Length(m)	9.0		13.5		18.0	
Offset Angle(°)	10	30	10	30	10	30
Working Radius(m)						
7.5	25.95	25.80	25.75	25.45	25.45	25.00
8.0	23.60	23.45	23.40	23.10	23.10	22.70
9.0	19.85	19.75	19.65	19.40	19.40	19.05
10.0	17.05	16.95	16.85	16.65	16.60	16.30
12.0	13.10	13.00	12.90	12.75	12.65	12.45
14.0	10.45	10.40	10.25	10.15	10.05	9.85
16.0	8.55	8.50	8.40	8.25	8.15	8.00
18.0	7.15	7.10	6.95	6.85	6.75	6.60
20.0	6.05	6.00	5.85	5.80	5.65	5.55
22.0	5.15	5.10	5.00	4.90	4.75	4.70
24.0	4.45	4.40	4.25	4.20	4.05	4.00
26.0	3.85	3.80	3.65	3.60	3.45	3.35
28.0	3.35	3.30	3.15	3.10	2.90	2.80
29.8	2.95	2.90	2.75	2.65	2.45	2.40

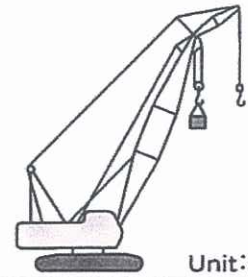
Unit:ton

Main Boom Length(m)	36					
Jib Boom Length(m)	9.0		13.5		18.0	
Offset Angle(°)	10	30	10	30	10	30
Working Radius(m)						
8.0	23.15	23.00	22.95	22.65	22.65	22.25
9.0	19.85	19.70	19.65	19.40	19.40	19.05
10.0	17.05	16.90	16.85	16.60	16.60	16.30
12.0	13.05	12.95	12.90	12.70	12.65	12.40
14.0	10.40	10.35	10.25	10.10	10.00	9.80
16.0	8.50	8.45	8.35	8.25	8.10	7.95
18.0	7.10	7.05	6.90	6.80	6.70	6.55
20.0	6.00	5.95	5.80	5.75	5.60	5.50
22.0	5.10	5.05	4.90	4.85	4.70	4.60
24.0	4.35	4.35	4.20	4.15	4.00	3.90
26.0	3.75	3.75	3.60	3.55	3.40	3.25
28.0	3.25	3.25	3.10	3.00	2.80	2.70
30.0	2.80	2.75	2.60	2.50	2.35	2.25
32.0	2.40	2.30	2.15	2.10	1.90	1.85
32.4	2.30	2.25	2.10	2.00	1.85	1.75

- NOTES
- The rated loads shown do not exceed 75% of tipping load with the machine on firm level ground.
 - To calculate the maximum load that can actually be lifted, deduct weight of all lifting accessories, such as main hook, from figures shown above.
 - Working radius is the horizontal distance from the swing center to the center of gravity of a lifted load.
 - The counterweight is 23.8ton.
 - Be sure to fully extend the side frames before operating the machine.
 - Correlation between the number of falls, maximum rated loads, hook weights are shown in the table below.

Hook capacity (t)	Hook weight (t)	Maximum rated load (t)				
		5	4	3	2	1
70.0	0.80	27.00	22.35	19.50	13.00	—
40.0	0.41	27.00	22.35	19.50	13.00	—
15.0	0.36			15.00	13.00	—
6.5	0.18					6.50

75% Tipping Load(PCSA Rating)



■Crane Ratings(Main boom with Jib in 360° Working Area)(3)

Unit:ton

Main Boom Length(m)	39					
Jib Boom Length(m)	9.0		13.5		18.0	
Offset Angle(°)	10	30	10	30	10	30
Working Radius(m)						
8.6	21.10	20.95	20.85	20.60	20.65	20.25
9.0	19.70	19.55	19.50	19.25	19.25	18.90
10.0	16.90	16.80	16.70	16.50	16.45	16.15
12.0	12.95	12.85	12.75	12.60	12.55	12.30
14.0	10.30	10.20	10.10	9.95	9.90	9.70
16.0	8.40	8.30	8.20	8.10	8.00	7.85
18.0	6.95	6.90	6.80	6.70	6.55	6.45
20.0	5.85	5.80	5.65	5.60	5.45	5.35
22.0	4.95	4.90	4.80	4.70	4.60	4.50
24.0	4.25	4.20	4.05	4.00	3.85	3.75
26.0	3.60	3.60	3.45	3.35	3.20	3.05
28.0	3.10	3.00	2.90	2.80	2.65	2.50
30.0	2.60	2.55	2.40	2.30	2.15	2.05
32.0	2.15	2.10	1.95	1.90	1.70	1.60
34.0	1.80	1.75	1.60	1.50	1.35	
35.0	1.65	1.60	1.40	1.35		

Unit:ton

Main Boom Length(m)	42					
Jib Boom Length(m)	9.0		13.5		18.0	
Offset Angle(°)	10	30	10	30	10	30
Working Radius(m)						
9.1	19.05	18.90	18.85	18.60	18.60	18.25
10.0	16.85	16.70	16.65	16.45	16.45	16.10
12.0	12.90	12.80	12.70	12.55	12.50	12.25
14.0	10.20	10.15	10.05	9.90	9.85	9.65
16.0	8.30	8.25	8.15	8.05	7.95	7.75
18.0	6.90	6.80	6.70	6.60	6.50	6.35
20.0	5.75	5.70	5.60	5.50	5.40	5.30
22.0	4.90	4.85	4.70	4.65	4.50	4.40
24.0	4.15	4.10	4.00	3.90	3.80	3.65
26.0	3.55	3.50	3.35	3.25	3.10	2.95
28.0	3.00	2.90	2.75	2.65	2.50	2.40
30.0	2.50	2.40	2.25	2.15	2.00	1.90
32.0	2.05	1.95	1.85	1.75	1.60	1.50
34.0	1.65	1.60	1.45	1.40		
36.0	1.35					

- NOTES
1. The rated loads shown do not exceed 75% of tipping load with the machine on firm level ground.
 2. To calculate the maximum load that can actually be lifted, deduct weight of all lifting accessories, such as main hook, from figures shown above.
 3. Working radius is the horizontal distance from the swing center to the center of gravity of a lifted load.
 4. The counterweight is 23.8ton.
 5. Be sure to fully extend the side frames before operating the machine.
 6. Correlation between the number of falls, maximum rated loads, hook weights are shown in the table below.

Hook capacity (t)	Hook weight (t)	Maximum rated load(t)			
		4	3	2	1
70.0	0.80	21.9	17.65	13.00	—
40.0	0.41	21.9	17.65	13.00	—
15.0	0.36		15.00	13.00	—
6.5	0.18				6.50

75% Tipping Load(PCSA Rating)



■ Crane Ratings(Main boom with Jib in 360° Working Area)(4)

Unit: ton

Main Boom Length(m)	45					
Jib Boom Length(m)	9.0		13.5		18.0	
Offset Angle(°)	10	30	10	30	10	30
Working Radius(m)						
9.7	17.55	17.40	17.35	17.10	17.10	16.80
10.0	16.75	16.65	16.55	16.35	16.35	16.05
12.0	12.80	12.70	12.60	12.45	12.40	12.15
14.0	10.15	10.05	9.95	9.80	9.75	9.55
16.0	8.20	8.15	8.05	7.95	7.85	7.70
18.0	6.80	6.70	6.60	6.50	6.40	6.30
20.0	5.65	5.60	5.50	5.40	5.30	5.20
22.0	4.80	4.75	4.60	4.55	4.45	4.30
24.0	4.05	4.00	3.90	3.80	3.70	3.50
26.0	3.45	3.35	3.25	3.10	3.00	2.85
28.0	2.85	2.75	2.65	2.55	2.40	2.25
30.0	2.35	2.25	2.15	2.05	1.90	1.75
32.0	1.90	1.85	1.70	1.60	1.45	1.35
34.0	1.50	1.45	1.30			

- NOTES**
1. The rated loads shown do not exceed 75% of tipping load with the machine on firm level ground.
 2. To calculate the maximum load that can actually be lifted, deduct weight of all lifting accessories, such as main hook, from figures shown above.
 3. Working radius is the horizontal distance from the swing center to the center of gravity of a lifted load.
 4. The counterweight is 23.8ton.
 5. Be sure to fully extend the side frames before operating the machine.
 6. Correlation between the number of falls, maximum rated loads, hook weights are shown in the table below.

Hook capacity (t)	Hook weight (t)	Maximum rated load(t)			
		4	3	2	1
70.0	0.80	18.25	14.25	13.00	—
40.0	0.41	18.25	14.25	13.00	—
15.0	0.36		14.25	13.00	—
6.5	0.18				6.50

■Crane Boom Construction

Boom length (m)	9	12	15	18	21	24	27	30	33	36	39	42	45	48	51	54
Lower boom 5m	1	1	1	1	1	1	1	1	1	1	1	1	1	1	1	1
Lower boom 4m	1	1	1	1	1	1	1	1	1	1	1	1	1	1	1	1
Boom inserts combination	I	II	I	II	I	II	I	II	I	II	I	II	I	II	I	II
3m boom insert		1	2	1	2	1	1	2	2	1	1	1	2	2	1	1
6m boom insert				1	1	2	1	1	1	2	2	1	1	1	1	1
9m boom insert							1	1	1	2	1	2	1	2	3	2
9m (B) boom insert							1	1	1	1	1	1	1	1	1	1
Available jib																
Available aux. jib																

Boom Inserts combination :

I : For operation of crane boom only

II : For operation of crane boom with jib

6m boom insert can be replaced with two 3m boom inserts, and 9m boom insert with a combination of 3m and 6m boom inserts.

■Crane Jib Construction

Jib length (m)	9	13.5	18
Lower jib 4.5m	1	1	1
Upper jib 4.5m	1	1	1
4.5m jib insert		1	2

■Component Weights and Dimensions for Transport

Components	Weight (t)	Q'ty	Length×Width×Height (m)			Remarks	
Basic machine	Basic machine	36.8	1	7.98	3.20	3.40	Gantry, ropes and side frames included, except counterweight
	Aux. counterweight	0.6	2	0.69	0.29	0.67	Mounted to side for raise winch
	Counterweight	7.4	1	3.20	0.62	1.37	Inner
	Counterweight	7.9	1	3.20	0.73	1.37	Center
	Counterweight	8.5	1	3.20	0.71	1.48	Outer
Crane front	Lower boom	1.01	1	5.16	1.63	1.72	Backstop included
	Upper boom	1.14	1	4.43	1.49	1.54	Pendant rope included
	Bridle	0.29	1	1.72	0.69	0.28	
	3m boom insert	0.42	1	3.10	1.50	1.61	Pendant rope included
	6m boom insert	0.70	1	6.10	1.50	1.61	
	9m boom insert	0.93	1	9.10	1.50	1.61	
	9m (B) boom insert	0.94	1	9.10	1.50	1.62	
	Lower jib	0.57	1	4.62	0.82	0.75	Jib mast included
	Upper jib	0.25	1	4.93	0.78	1.11	
	4.5m jib insert	0.14	1	4.60	0.64	0.74	
	Aux jib	0.21	1	1.26	0.82	0.87	
	70ton hook	0.80	1	0.62	0.59	1.82	
	40ton hook	0.41	1	0.62	0.32	1.59	
15ton hook	0.36	1	0.62	0.31	1.36		
6.5ton hook	0.18	1	0.30	0.30	0.84		